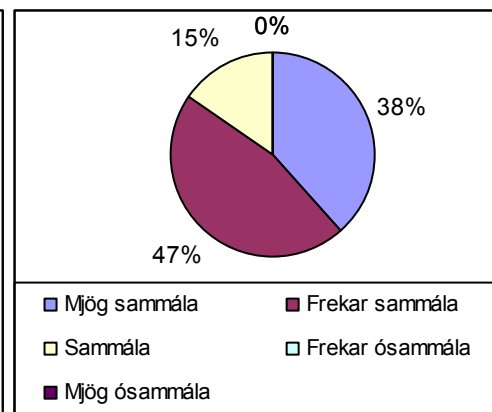
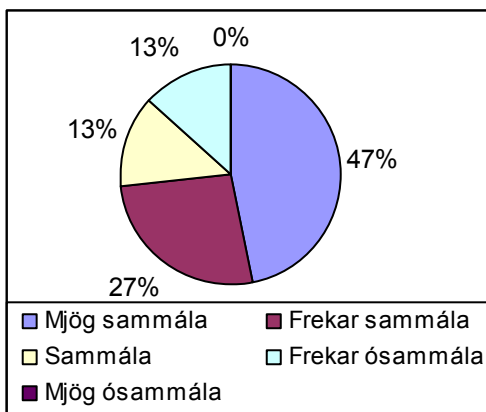
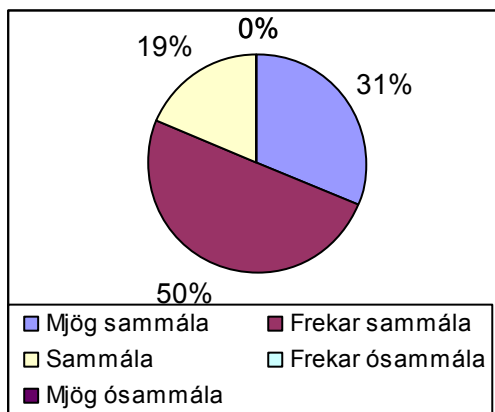


Sjálfsmat skóla

Viðhorfskönnun foreldra

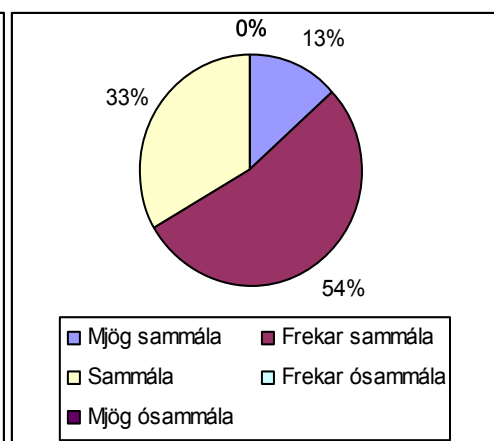
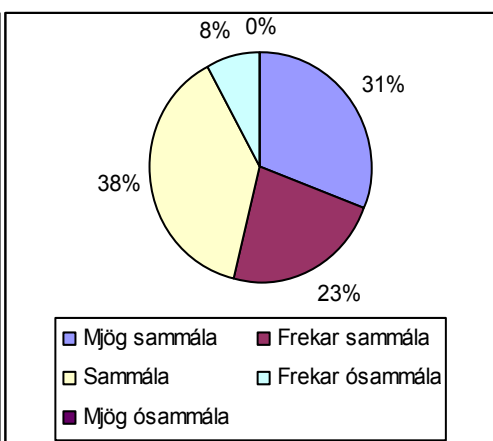
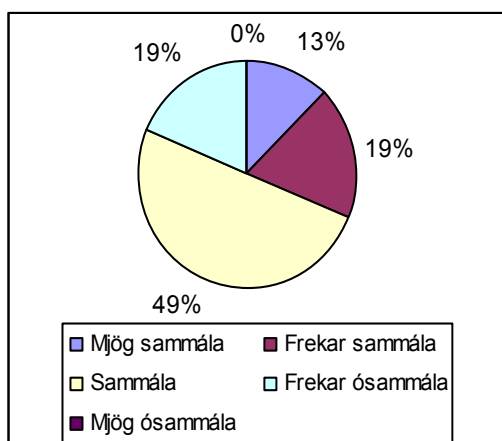
1. Barninu mínu/okkar líður vel í skólanum

	2009	2010	2011
Mjög sammála	5	5	7
Frekar sammála	8	6	4
Sammála	3	2	2
Frekar ósammála	0	0	2
Mjög ósammála	0	0	0



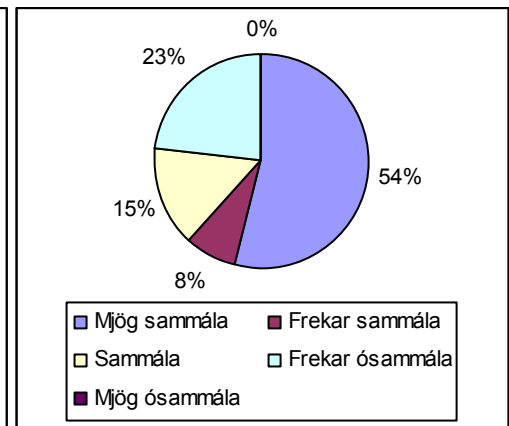
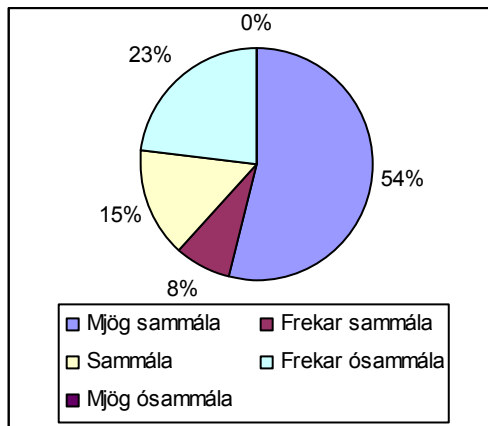
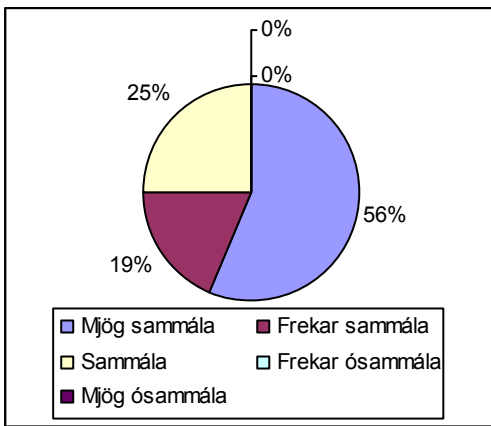
2. Kennarar skólans ráðleggja mér/okkur hvernig ég/við get/getum aðstoðað barnið mitt/okkar við heimanámið.

	2009	2010	2011
Mjög sammála	2	4	2
Frekar sammála	3	3	8
Sammála	8	5	5
Frekar ósammála	3	1	0
Mjög ósammála	0	0	0



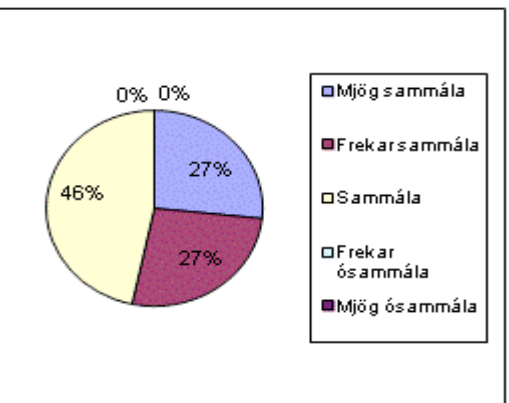
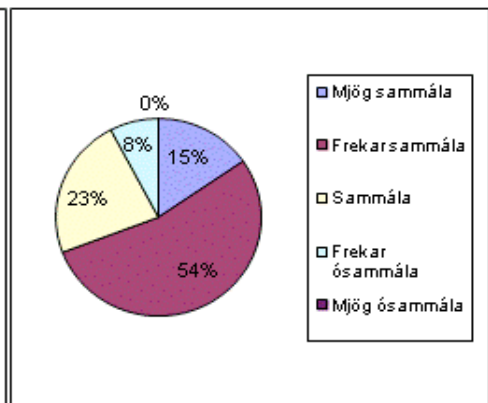
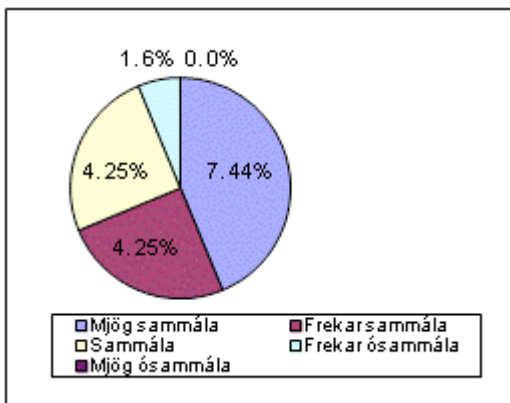
3. Kennarar láta mig/okkur vita þegar barninu mínu/okkar gengur vel í skólanum.

	2009	2010	2011
Mjög sammála	9	7	2
Frekar sammála	3	1	7
Sammála	4	2	2
Frekar ósammála	0	3	4
Mjög ósammála	0	0	0



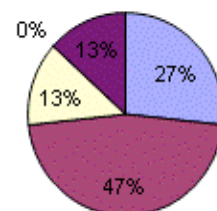
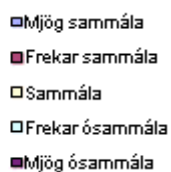
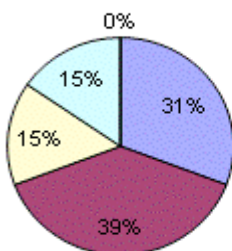
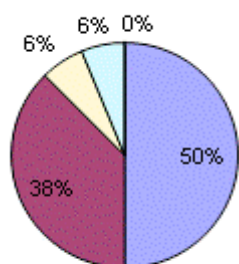
4. Ég/ við tel/teljum mig/okkur fylgjast vel með gengi/námi barnsins míns/okkar.

	2009	2010	2011
Mjög sammála	7	2	4
Frekar sammála	4	7	4
Sammála	4	3	7
Frekar ósammála	1	1	0
Mjög ósammála	0	0	0



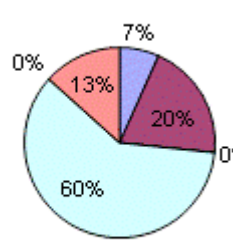
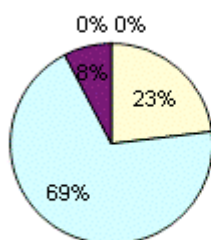
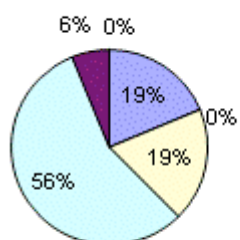
5. Ég/við er/erum sátt við störf kennara barnsins míns/okkar.

	2009	2010	2011
Mjög sammála	8	4	4
Frekar sammála	6	5	7
Sammála	1	2	2
Frekar ósammála	1	2	0
Mjög ósammála	0	0	2



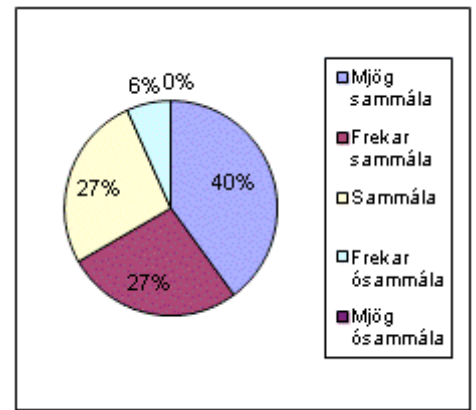
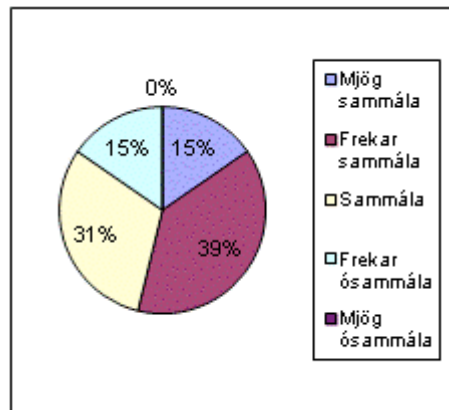
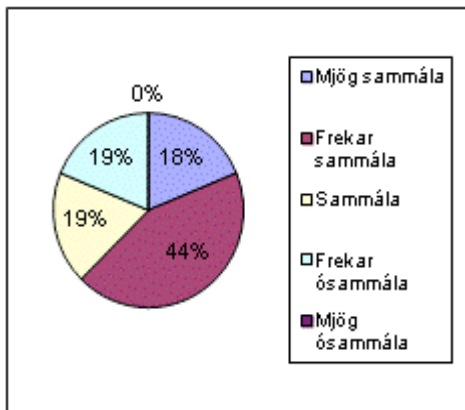
6. Skólinn ætlast til of mikils af barninu mínu/okkar þ.e heimanám.

	2009	2010	2011
Mjög sammála	3	0	1
Frekar sammála	0	0	3
Sammála	3	3	0
Frekar ósammála	9	9	9
Mjög ósammála	1	1	0
Svara ekki			2



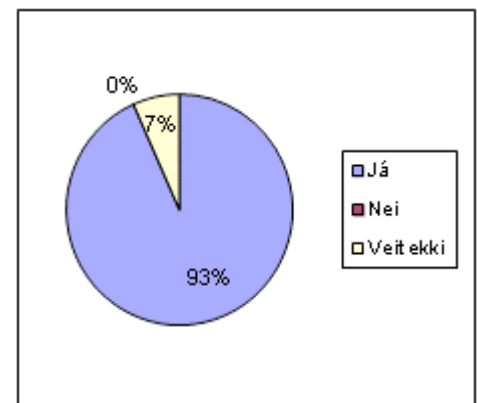
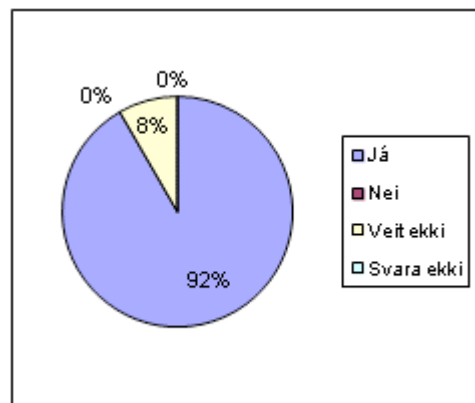
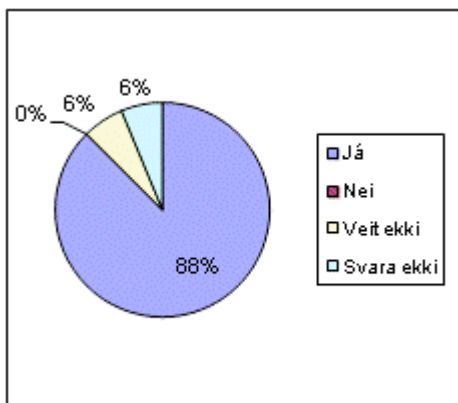
7. Ég/við fæ/fáum ágætar upplýsingar frá skólanum um allt sem viðkemur barninu mínu/okkar.

	2009	2010	2011
Mjög sammála	3	2	6
Frekar sammála	7	5	4
Sammála	3	4	4
Frekar ósammála	3	2	1
Mjög ósammála	0	0	0



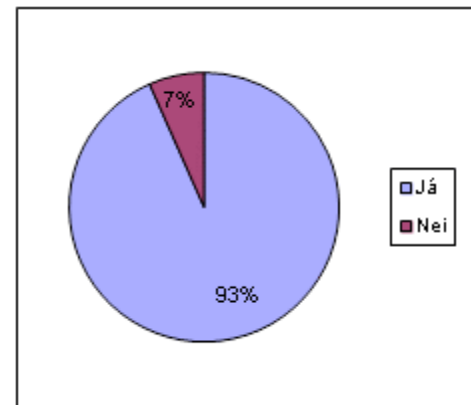
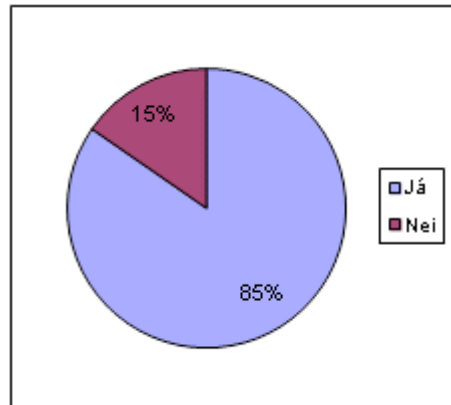
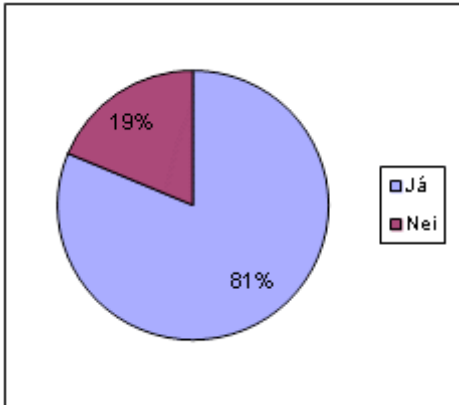
8. Barnið mitt/okkar á vini í skólanum.

	2009	2010	2011
Já	14	11	14
Nei	0	0	0
Veit ekki	1	1	1
Svara ekki	1	0	



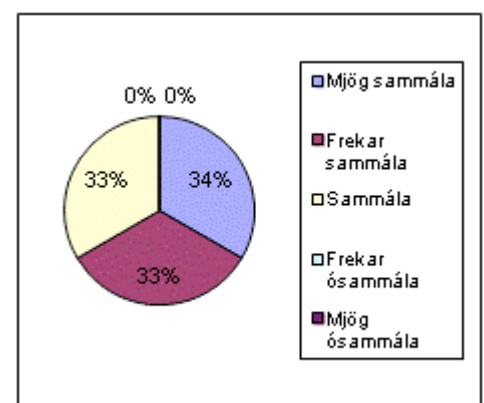
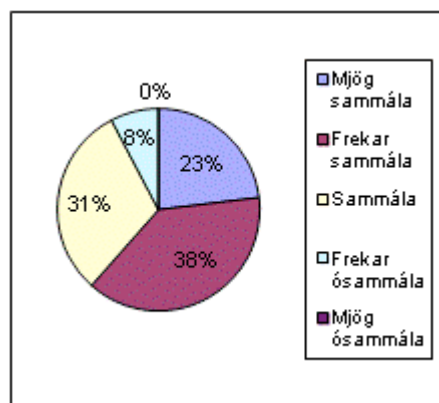
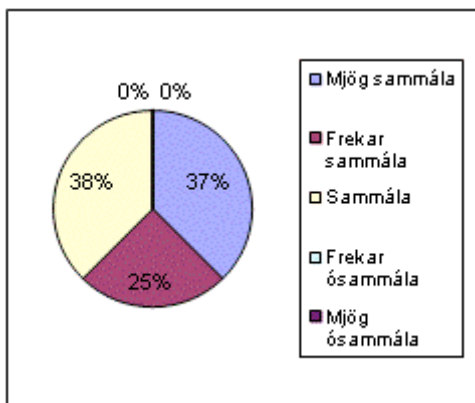
9. Barnið mitt/okkar hefur aðgang að nettengdri tölvu heima.

	2009	2010	2011
Já	13	11	14
Nei	3	2	1



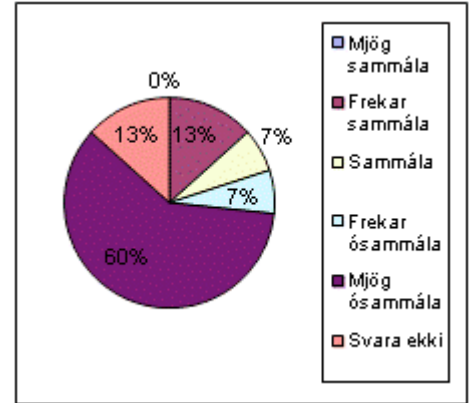
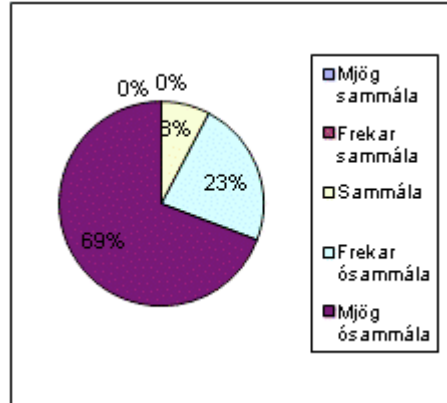
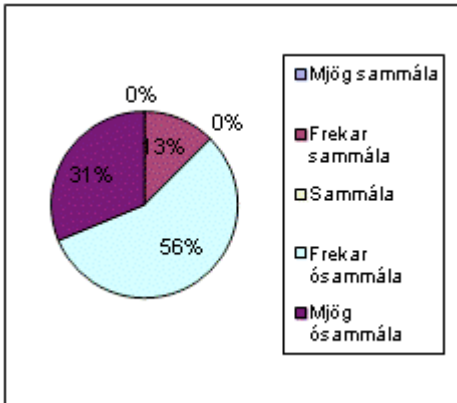
10. Skólinn reynir að efla samstarf við foreldra.

	2009	2010	2011
Mjög sammála	6	3	5
Frekar sammála	4	5	5
Sammála	6	4	5
Frekar ósammála	0	1	0
Mjög ósammála	0	0	0



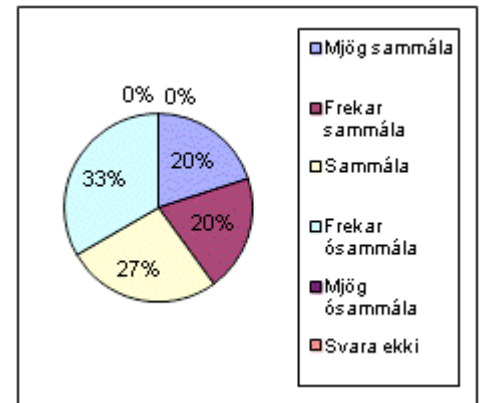
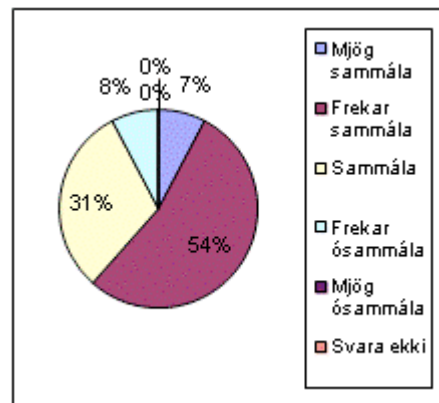
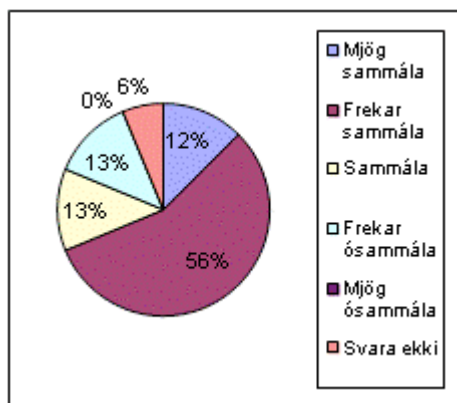
11. Vegna vinnu minnar á ég erfitt með að hafa samskipti við skólann.

	2009	2010	2011
Mjög sammála	0	0	0
Frekar sammála	2	0	2
Sammála	0	1	1
Frekar ósammála	9	3	1
Mjög ósammála	5	9	9
Svara ekki			2



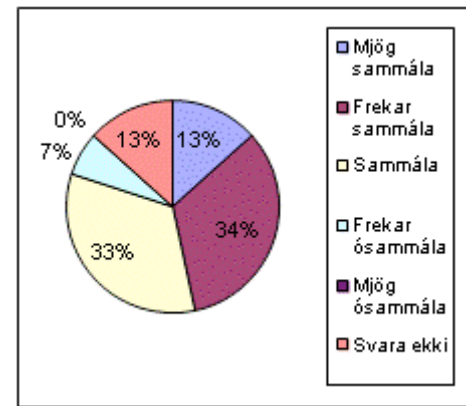
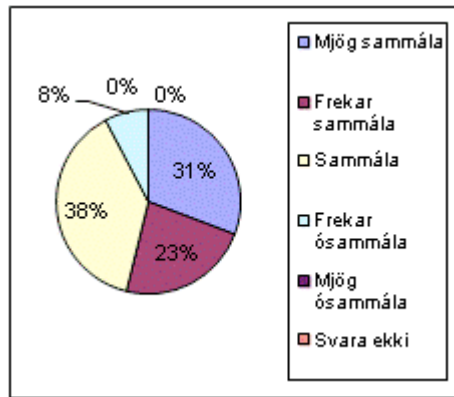
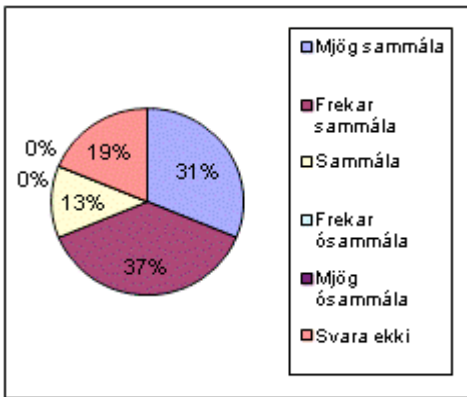
12. Starfsandinn í bekknum er góður að mati barnsins míns/okkar.

	2009	2010	2011
Mjög sammála	2	1	3
Frekar sammála	9	7	3
Sammála	2	4	4
Frekar ósammála	2	1	5
Mjög ósammála	0	0	0
Svara ekki	1	0	0



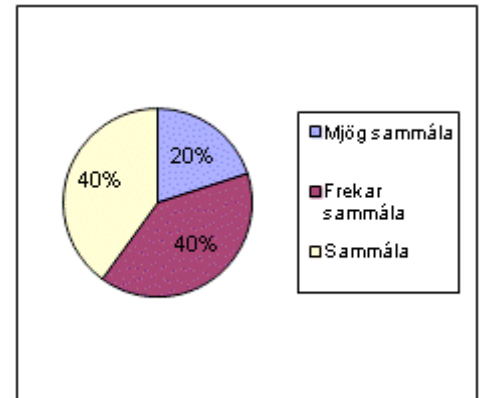
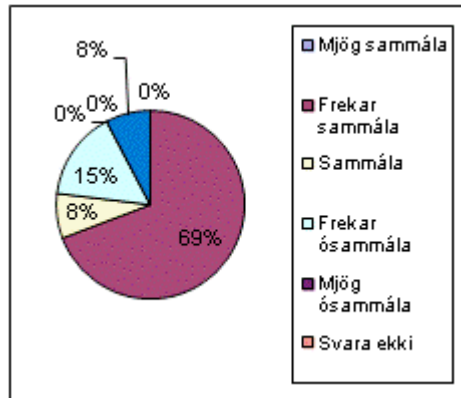
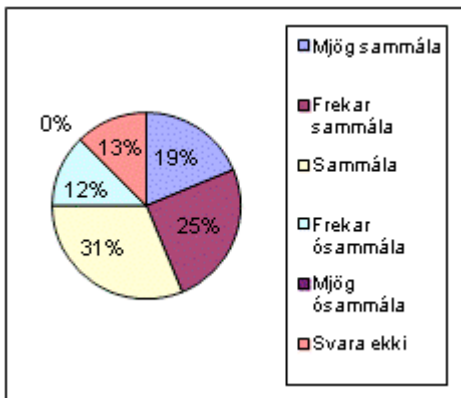
13. Ég/við tel/teljum að nemandinn sé í fyrirrúmi í Grunnskóla Borgarfjarðar.

	2009	2010	2011
Mjög sammála	5	4	2
Frekar sammála	6	3	5
Sammála	2	5	5
Frekar ósammála	0	1	1
Mjög ósammála	0	0	0
Svara ekki	3	0	2



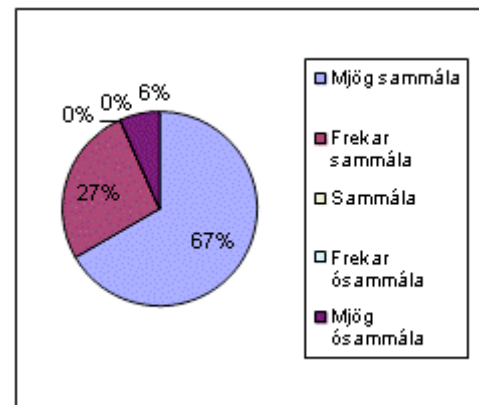
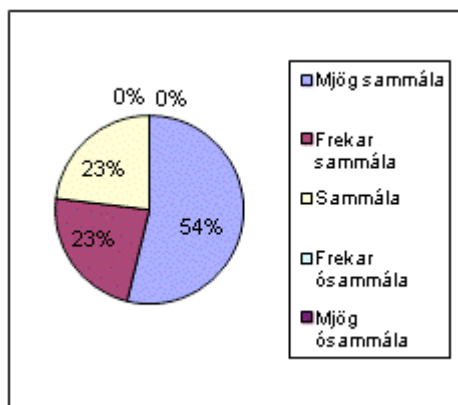
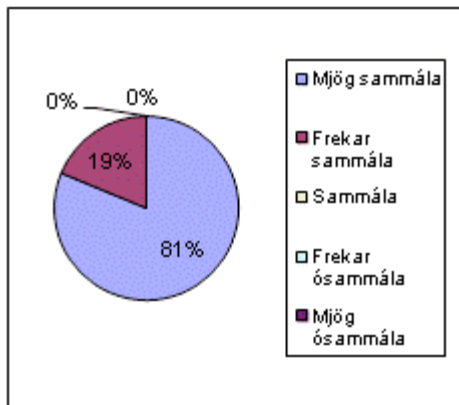
14. Ég/við tel/teljum að viðhorf annarra foreldra til skólans sé jákvætt.

	2009	2010	2011
Mjög sammála	3	0	3
Frekar sammála	4	9	6
Sammála	5	1	6
Frekar ósammála	2	2	0
Mjög ósammála	0	0	0
Svara ekki	2	0	
Ógilt/fleiri svarmöguleikar	0	1	



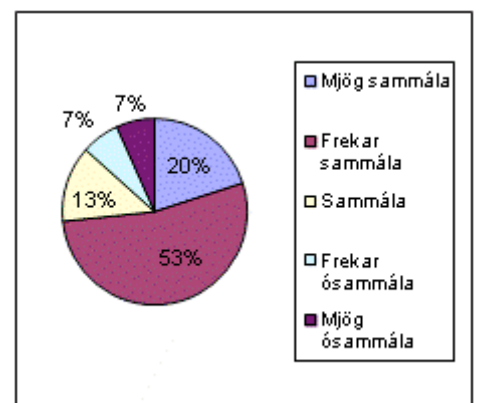
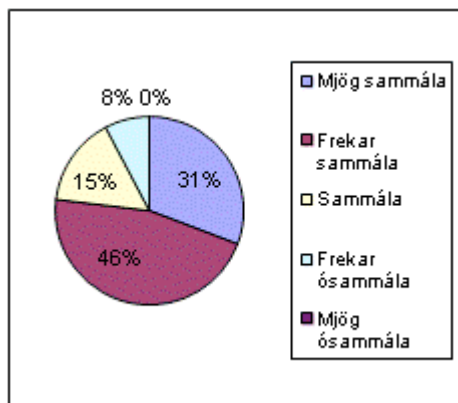
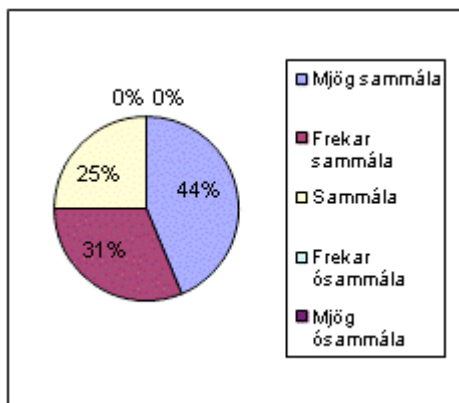
15. Mér/okkur finnst ég/við ávallt velkomin/n í skólann.

	2009	2010	2011
Mjög sammála	13	7	10
Frekar sammála	3	3	4
Sammála	0	3	0
Frekar ósammála	0	0	0
Mjög ósammála	0	0	1



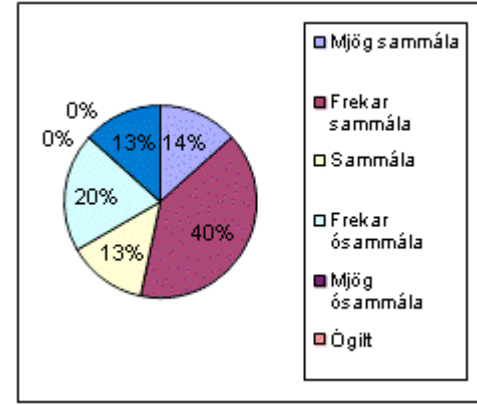
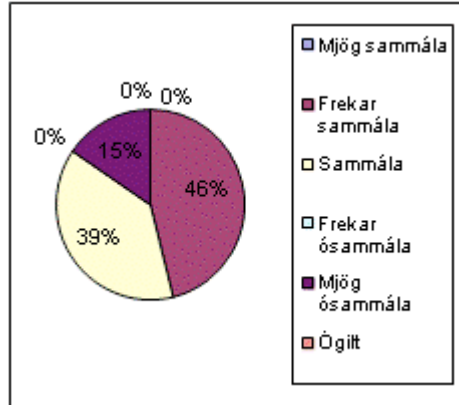
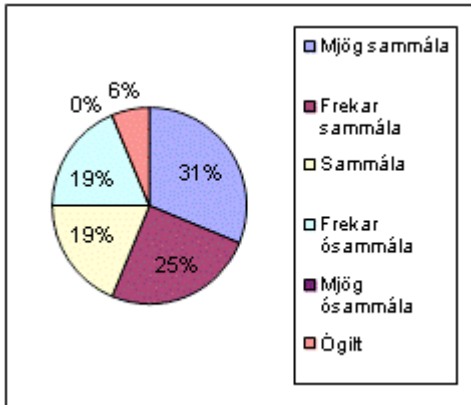
16. Ég/við er/erum sátt við þá þjónustu sem skólinn veitir barninu mínu/okkar.

	2009	2010	2011
Mjög sammála	7	4	3
Frekar sammála	5	6	8
Sammála	4	2	2
Frekar ósammála	0	1	1
Mjög ósammála	0	0	1



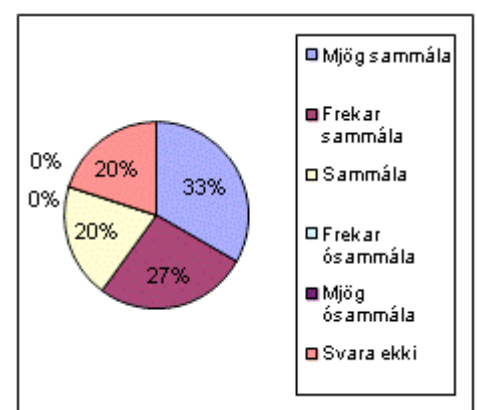
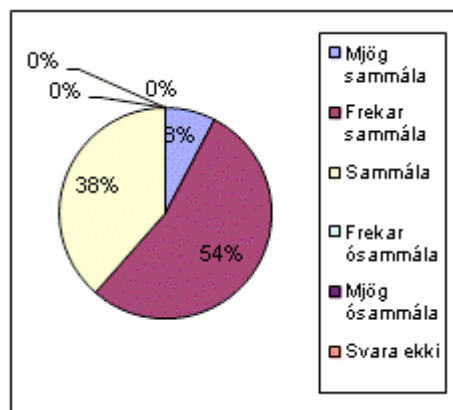
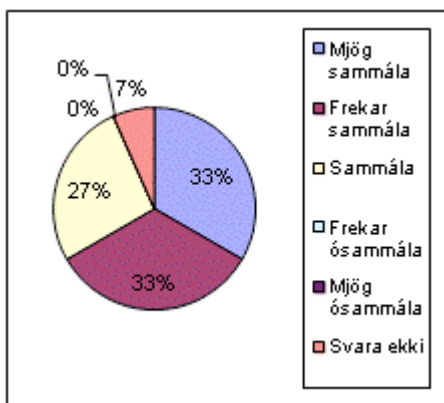
17. Ef upp koma agavandamál tel/teljum ég/við að skólinn taki af festu á þeim.

	2009	2010	2011
Mjög sammála	5	0	2
Frekar sammála	4	6	6
Sammála	3	5	2
Frekar ósammála	3	0	3
Mjög ósammála	0	2	0
Ógilt	1	0	
Svara ekki			2



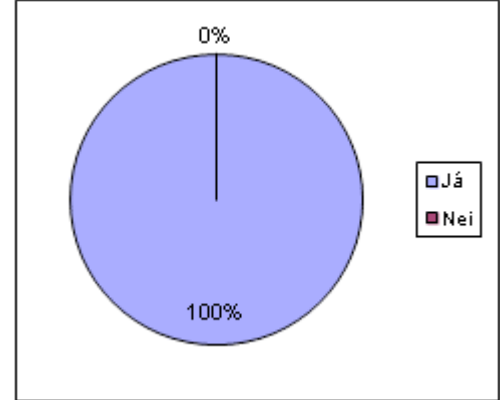
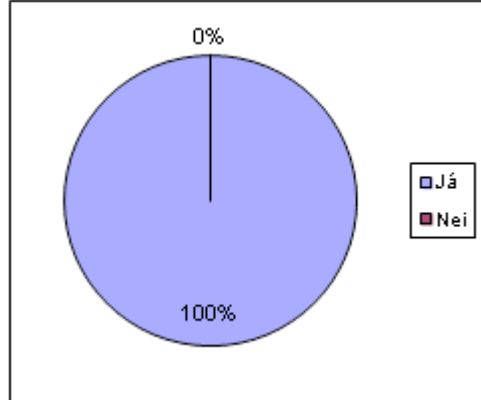
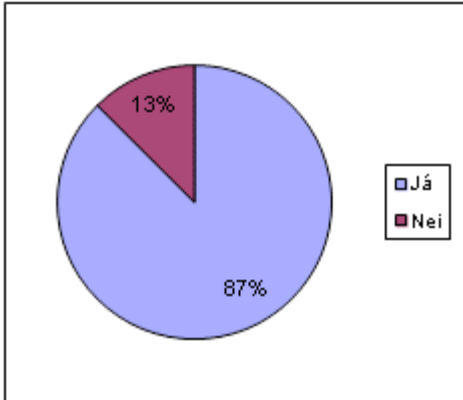
18. Grunnskóli borgarfjarðar nýtur virðingar í samfélaginu.

	2009	2010	2011
Mjög sammála	5	1	5
Frekar sammála	5	7	4
Sammála	4	5	3
Frekar ósammála	0	0	0
Mjög ósammála	0	0	0
Svara ekki	1	0	3



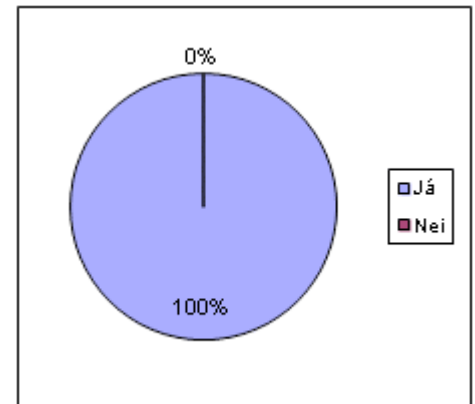
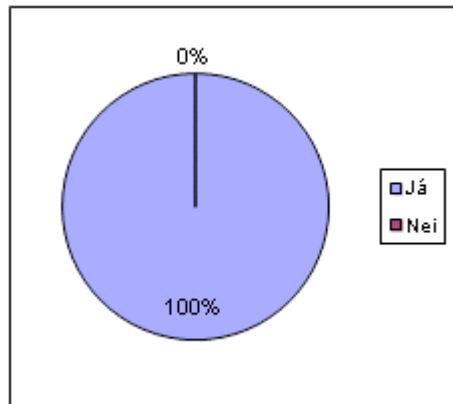
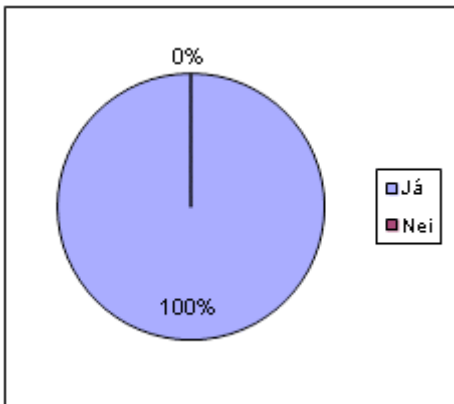
19. Ég/við er/erum sátt við þá tímalengd sem foreldraviðtölum er gefin.

	2009	2010	2011
Já	14	13	15
Nei	2	0	0



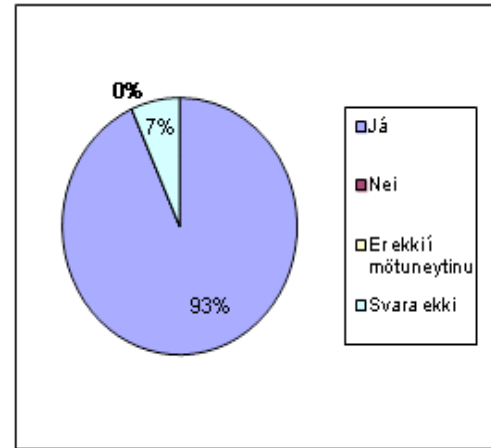
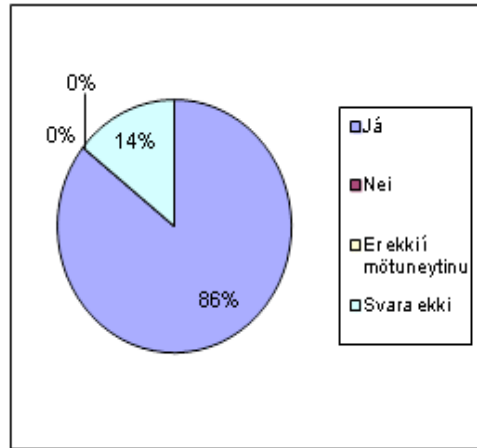
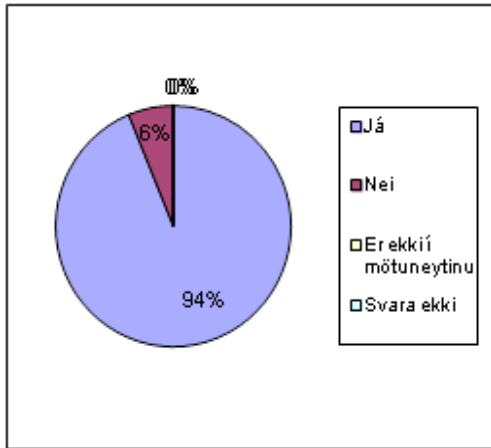
20. Ég/við er/erum sátt við að hafa hádegishlé í 40 mínútur.

	2009	2010	2011
Já	16	13	15
Nei	0	0	0



21. Barnið mitt/okkar er ánægt með skólamáltíðirnar.

	2009	2010	2011
Já	15	12	14
Nei	1	0	0
Er ekki í mótuneytinu			0
Svara ekki	0	2	1



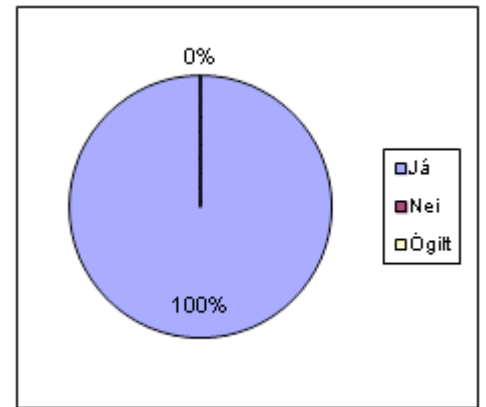
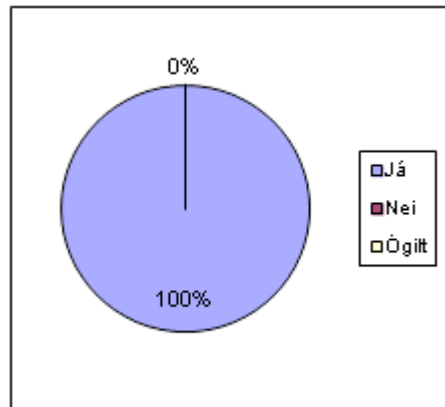
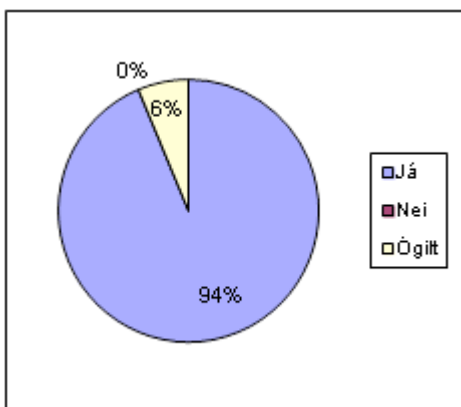
22. Ég/við er/erum ánægð með útgáfu á a) afmælisdagatali b) skólablaði.

a)afmælisdagatal

	2009	2010	2011
Já	15	13	15
Nei	0	0	0
Ógilt	1	0	0

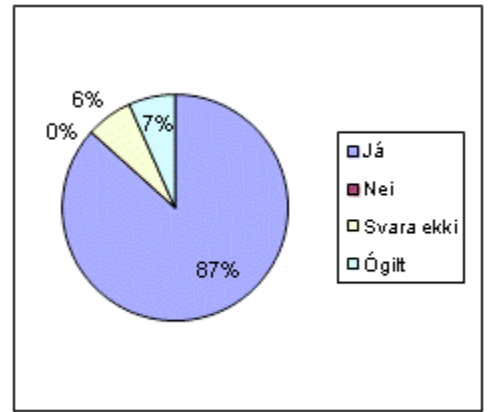
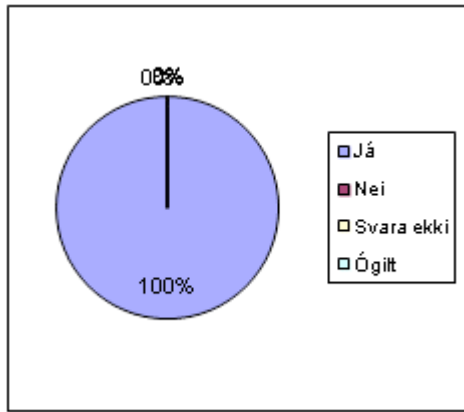
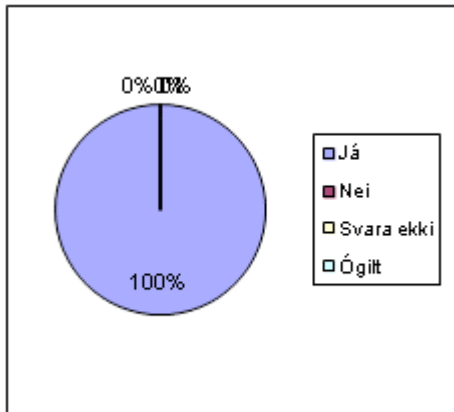
b) skólablaði

	2009	2010	2011
Já	16	13	13
Nei	0	0	0
Svara ekki	0	0	1
Ógilt	0	0	1



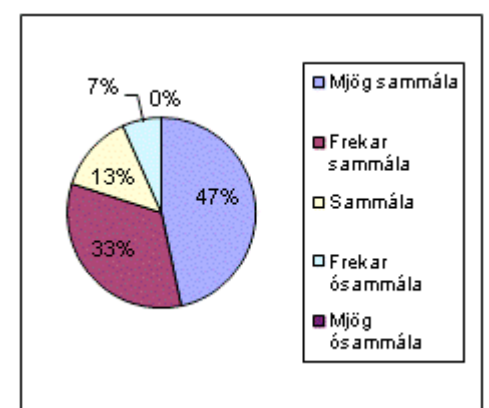
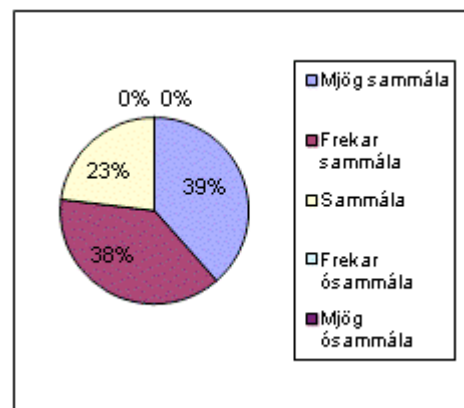
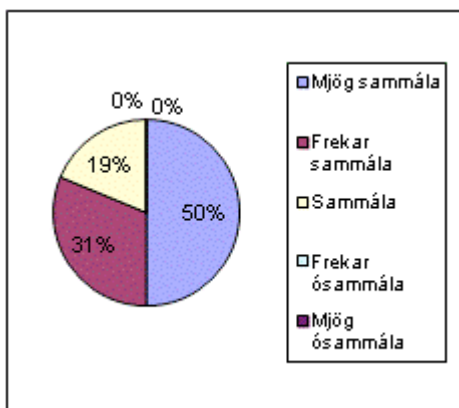
23. Ég/við er/erum ánægð með heimasíðu skólans.

	2009	2010	2011
Mjög sammála	8	5	7
Frekar sammála	5	5	5
Sammála	3	3	2
Frekar ósammála	0	0	1
Mjög ósammála	0	0	0



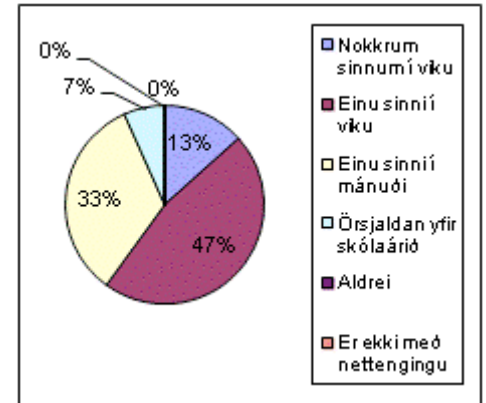
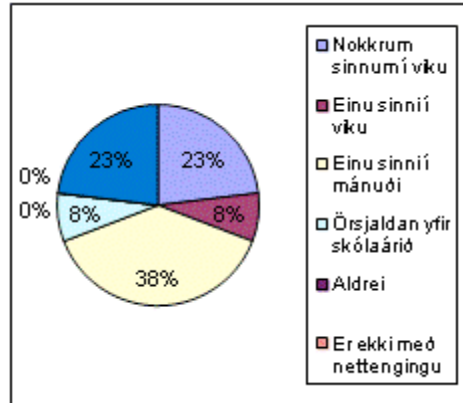
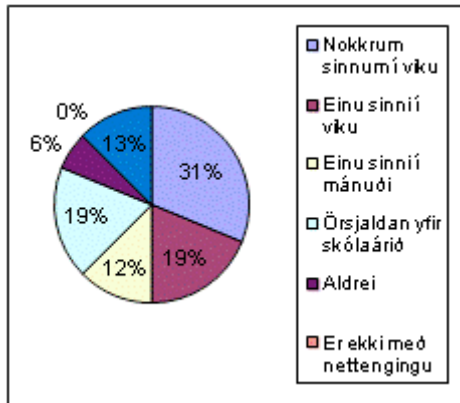
24. Ég/við fer/förum inn á heimasíðu skólans?

	2009	2010	2011
Nokkrum sinnum í viku	5	3	2
Einu sinni í viku	3	1	7
Einu sinni í mánuði	2	5	5
Örsjaldan yfir skólaárið	3	1	1
Aldrei	1	0	0
Er ekki með nettengingu			0
Ógilt	2	3	0



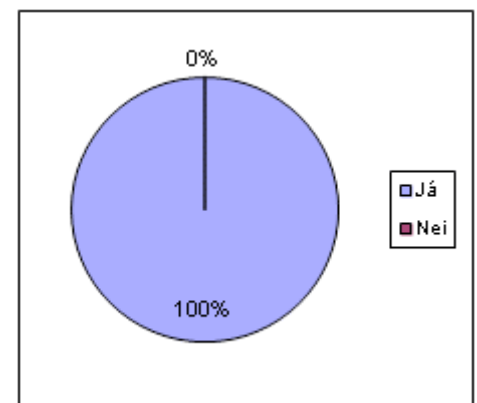
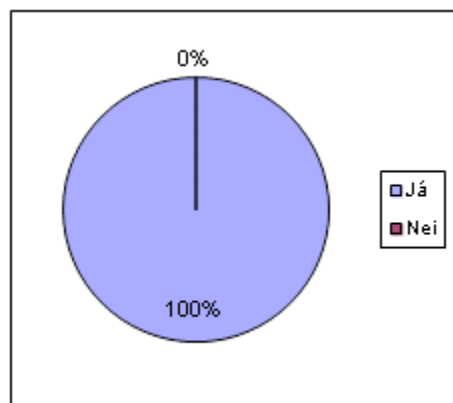
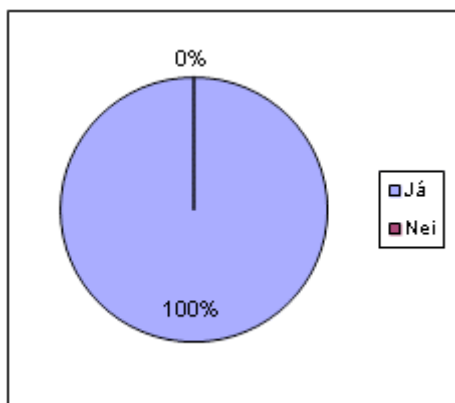
25. Ertu sátt/ur við skóladagatalið sem sent var heim í upphafi skólaárs?

	2009	2010	2011
Já	16	13	15
Nei	0	0	0



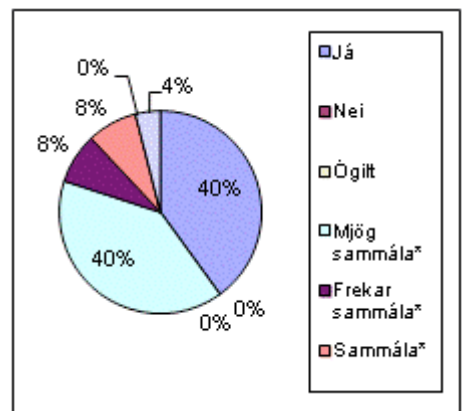
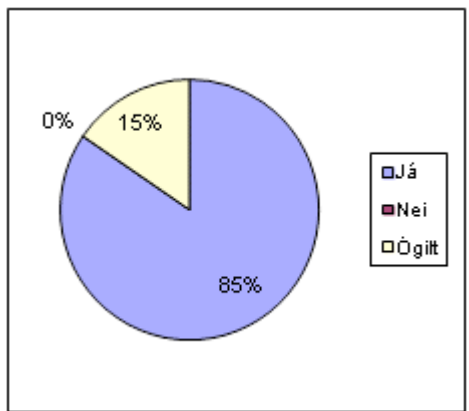
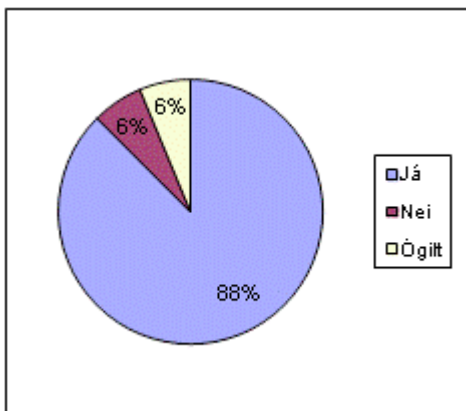
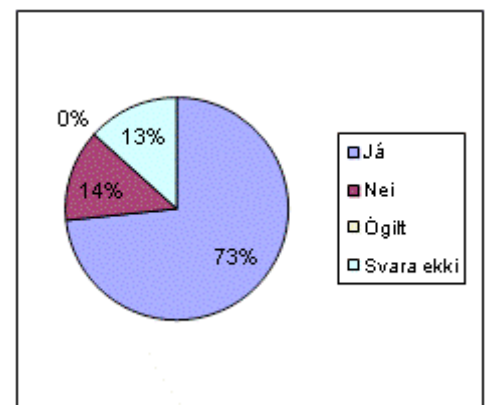
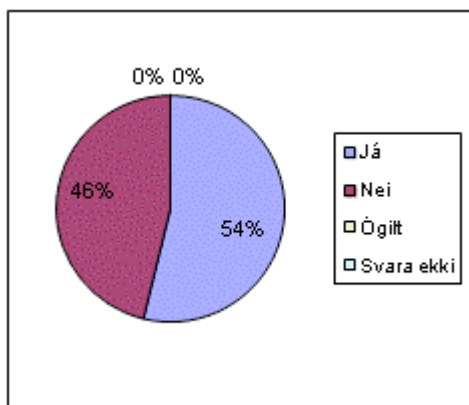
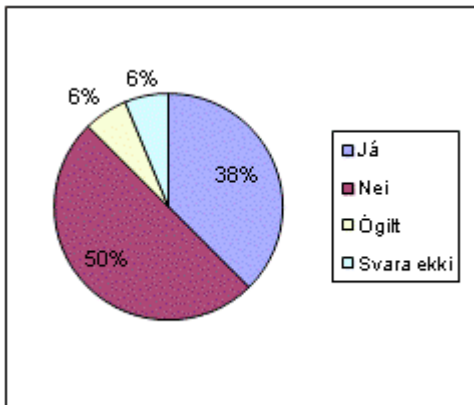
26. Ég/við vil/viljum fá tilkynningar og skilaboð frá skólanum með tölvupósti.

	2009	2010	2011
Já	6	7	11
Nei	8	6	2
Ógilt	1	0	
Svara ekki	1	0	2



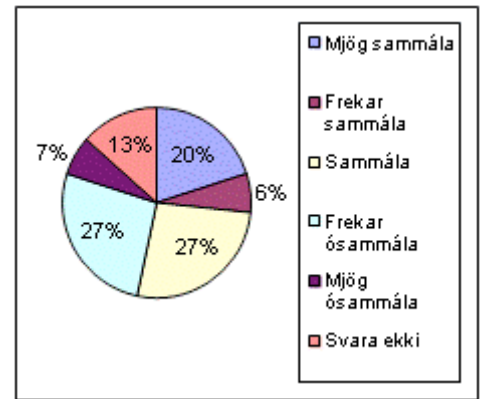
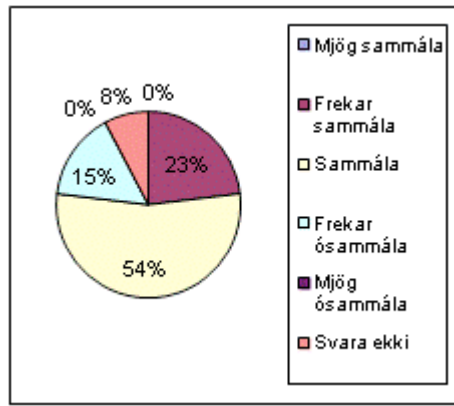
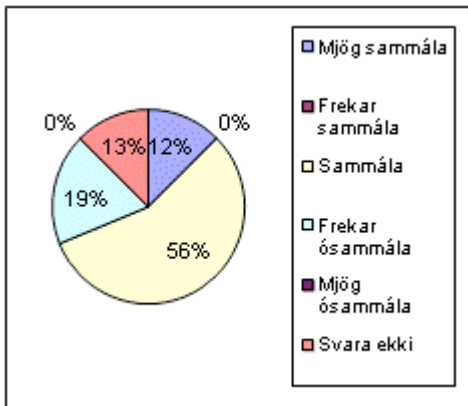
27. Ég/við er/erum ánægð með að skóladagurinn hefjist klukkan átta.

	2009	2010	2011
Já	14	11	10
Nei	1	0	0
Ógilt	1	2	0
Mjög sammála*			10
Frekar sammála*			2
Sammála*			2
Frekar ósammála*			0
Mjög ósammála*			1



28. Ég/við vil/ viljum hafa fleiri foreldrafélagsfundir yfir skólaárið

	2009	2010	2011
Mjög sammála	2	0	3
Frekar sammála	0	3	1
Sammála	9	7	4
Frekar ósammála	3	2	4
Mjög ósammála	0	0	1
Svara ekki	2	1	2



29. Opin spurning: Ef foreldrar vilja tjá sig betur um einhver atriði sem viðkoma barni þess og skóla þá er það velkomið.

1. Varðandi tölvupóst. Ég fer sjaldan í póstinn minn þannig að það kæmist ekki nógu fljótt til skila en ef út í það væri farið þá hlýt ég að geta vanið mig á að að kíkja á póstinn minn. (2009).
2. Þegar barn eða börn eru lengi í skóla þá er gott að hafa lítið heimanám. (2009).
3. Mætti vera betri vinnufriður í 7.-8. bekkjar stofu. (2011).
4. Hugsanlega mætti vera meiri agi í skólanum. (2011).
5. Skólinn á ekki að byrja fyrr en kl. 9.00. Mjög fáir eða nokkrir foreldrar hefja vinnu klukkan átta og það er mun betra fyrir börnin að þurfa ekki að vakna svo snemma, bæði vegna myrkursins á morgnana og félagslegra þátta. (2011).